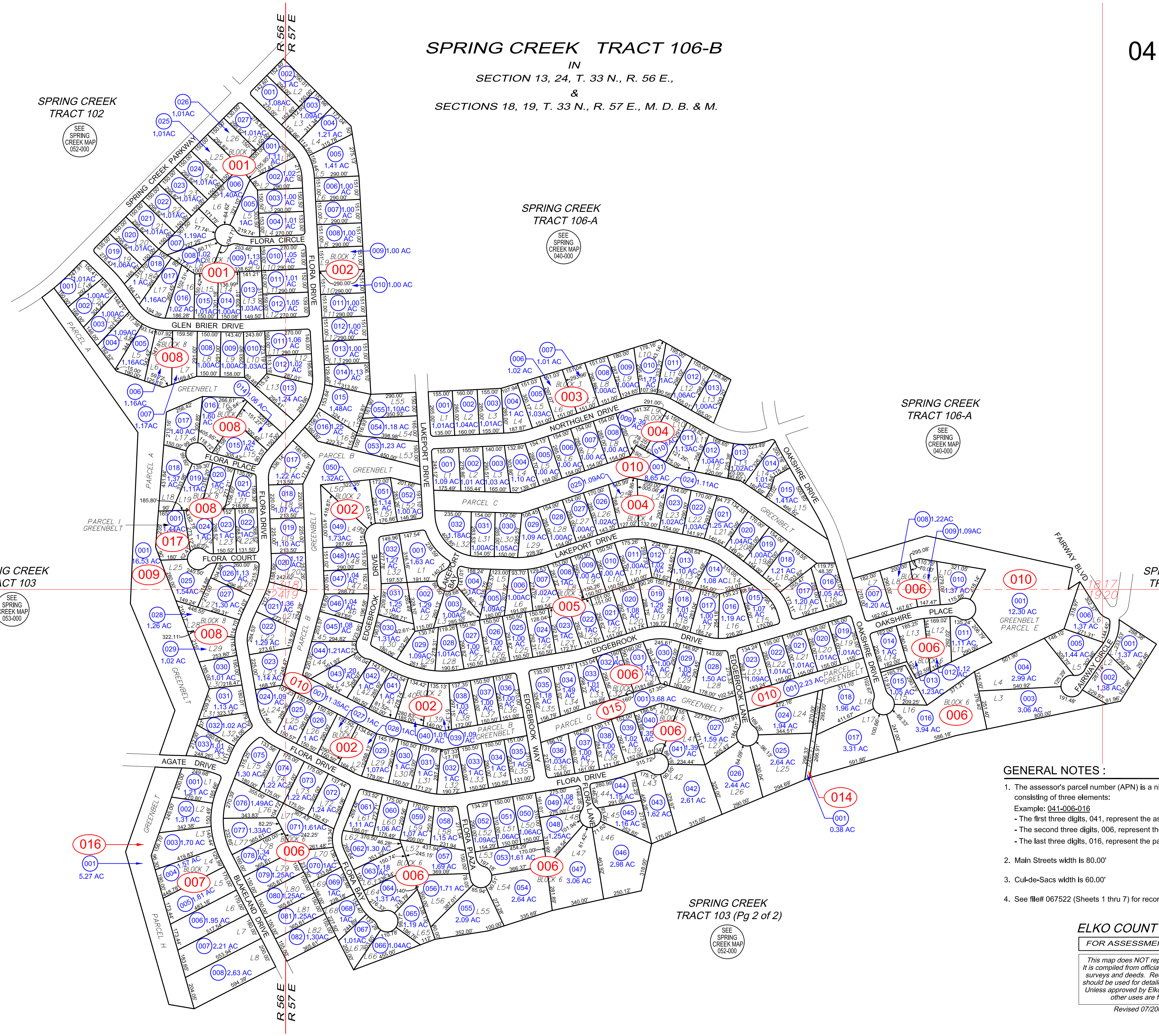


SPRING CREEK TRACT 106-B  
IN  
SECTION 13, 24, T. 33 N., R. 56 E.,  
&  
SECTIONS 18, 19, T. 33 N., R. 57 E., M. D. B. & M.



SPRING CREEK TRACT 102  
SEE SPRING CREEK MAP 052-000

SPRING CREEK TRACT 106-A  
SEE SPRING CREEK MAP 040-000

SPRING CREEK TRACT 106-A  
SEE SPRING CREEK MAP 040-000

SPRING CREEK TRACT 103  
SEE SPRING CREEK MAP 053-000

SPRING CREEK TRACT 106-C  
SEE SPRING CREEK MAP 042-000

SPRING CREEK TRACT 103 (Pg 2 of 2)  
SEE SPRING CREEK MAP 052-000

- GENERAL NOTES :**
- The assessor's parcel number (APN) is a nine-digit identifier consisting of three elements:  
Example: 041-006-016  
- The first three digits, 041, represent the assessor's map book #.  
- The second three digits, 006, represent the page/block #.  
- The last three digits, 016, represent the parcel itself.
  - Main Streets width is 80.00'
  - Cul-de-Sacs width is 60.00'
  - See file# 067522 (Sheets 1 thru 7) for recorded survey map.

**ELKO COUNTY, NEVADA**  
FOR ASSESSMENT USE ONLY

*This map does NOT represent a survey. It is compiled from official records, including surveys and deeds. Recorded documents should be used for detailed legal information. Unless approved by Elko County Assessor, other uses are forbidden.*

Revised 07/2007 JLS